

## **2 sets of MAK-Engine Power Plant for Sale**

### **Specification:**

Number: 2 sets

### **ENGINE 1:**

**Maker:** MAK

Model: 16 CM 32C

Year: 2005

Output: 7460 KW

Running Hours: 11225

### **ENGINE 2:**

**Maker:** MAK

Model: 16 CM 32

Year: 1999

Output: 7450 KW

Running Hours: 38480

**Condition:** Both engines along with alternators and other equipment's like PHE, HFO, LFO, Air coolers, Motors etc. are in good condition and engines has a history of timely overhauling.

For purchase and other details please get in touch with our office.

N GOPALAN NAIR - Director

Email: [fuji@fujitech.net](mailto:fuji@fujitech.net)

9820092007



AVK		AVK Deutschland GmbH & Co. KG D-85051 Ingolstadt	
Synchron Generator			
Synchronous	VDE 0530/	Typ	DIG 171M/8
9042		AWA No.	8323077 A102
6000	Y	Stromart Current	AC
870		Baujahr Year of manuf.	1.999
		K.T. Coolant T.	50 °C
		cos φ p.f.	0,80
Drehrichtung Rot. Direction	UVW	750 1/min	Hz cps
Erregung Excitation	60	v	4,3
Isol. Klasse Insul. Class	F	IP 23	K 854, 1.56
Hilfsregung Aux. Excitation	90	v	50 Hz
		Funktörgrad RIS degree	N
		Gewicht Weight	32,5T
Stillstandsheizung anti condensation heater		W	V
	1500	230	A
		6,6	

## ALTERNATOR





# MAK ENGINE

RUNNING HOURS : 11225

MAJOR OVER HAULING

JAN ' 2016





# FUEL MODULE ALONG WITH PUMPS 3.3 KW



### COOLER DETAILS

TYPE : VT80 B-12

Pressure : 10 bar

Make : GEA ECOFLEX

### AUTOMATIC FILTER DETAILS

MAKE: BOLL & KIRCH

TYPE: 6.61 DN 150

SERIAL NO: 3687284/5A

## LUBE OIL COOLER WITH AUTOMATIC FILTER



### MOTOR DETAILS

TYPE : M1200L2

S.NO : 320001

RATING: 30 KW

RPM : 2950

### PUMP DETAILS

TYPE : ES 80-160.2/B

S.NO : 2035732

KW : 21.6

# HT & LT PUMPS





## MOTOR DETAILS

TYPE : DM1200L4

RATING: 30KW

RPM : 1465

MAKE : CROMPTON

# LUBE OIL PUMP



## SEPARATOR DETAILS

TYPE: LOPX 707-SFD34

S.NO : 4107 402

PRODUCT NO: 881243-01-03

MACHINE TOP PART : 560979-01

BOWL : 554057-03

MACHINE BOTTOM : 549313-01

MAX. SPEED BOWL : 5.175 r/min

SPEED MOTOR SHAFT : 1500 r/min

Motor power : 12KW

# LUBE OIL SEPARATOR





## NAME PLATE DETAILS

Make : ABB

TYPE : TPL 65B02

S.NO : 423950

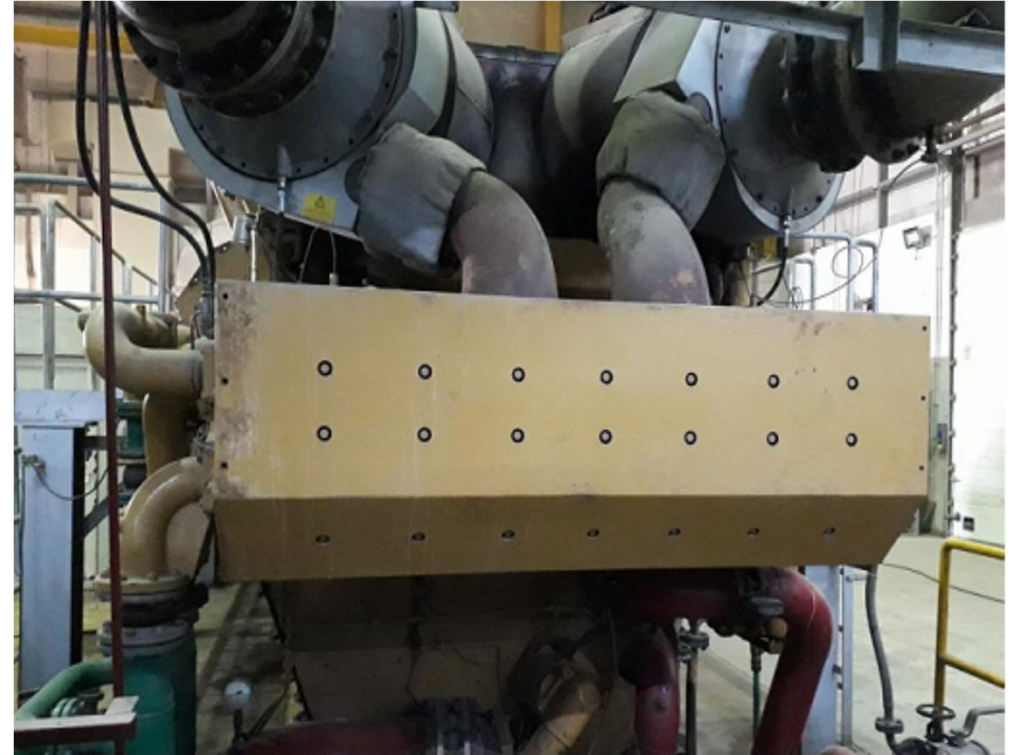
Tn Max : 680 deg

Tb Max : 650 deg

Nm Max : 503

Nb Max : 479

# TURBO CHARGER



# CHARGE AIR COOLER

SERVICED IN OCT'2017



# CHARGE AIR INTAKE







# ALTERNATOR





# MAK ENGINE

RUNNING HOURS : 38480

MAJOR OVER HAULING

OCT ' 2017



# FUEL MODULE ALONG WITH PUMPS 3.3 KW





### COOLER DETAILS

TYPE : VT80 B-12

Pressure : 10 bar

Make : GEA ECOFLEX

### AUTOMATIC FILTER DETAILS

MAKE: BOLL & KIRCH

TYPE: 6.61 DN 150

SERIAL NO: 3687284/5A

## LUBE OIL COOLER WITH AUTOMATIC FILTER



### MOTOR DETAILS

TYPE : M1200L2

S.NO : 320001

RATING: 30 KW

RPM : 2950

### PUMP DETAILS

TYPE : ES 80-160.2/B

S.NO : 2035732

KW : 21.6

# HT & LT PUMPS



## MOTOR DETAILS

TYPE : DM1200L4

RATING: 30KW

RPM : 1465

MAKE : CROMPTON

# LUBE OIL PUMP





## SEPARATOR DETAILS

TYPE: LOPX 707-SFD34

S.NO : 4107 402

PRODUCT NO: 881243-01-03

MACHINE TOP PART : 560979-01

BOWL : 554057-03

MACHINE BOTTOM : 549313-01

MAX. SPEED BOWL : 5.175 r/min

SPEED MOTOR SHAFT : 1500 r/min

Motor power : 12KW

# LUBE OIL SEPARATOR



## NAME PLATE DETAILS

Make : ABB

TYPE : TPL 65B02

S.NO : 423950

Tn Max : 680 deg

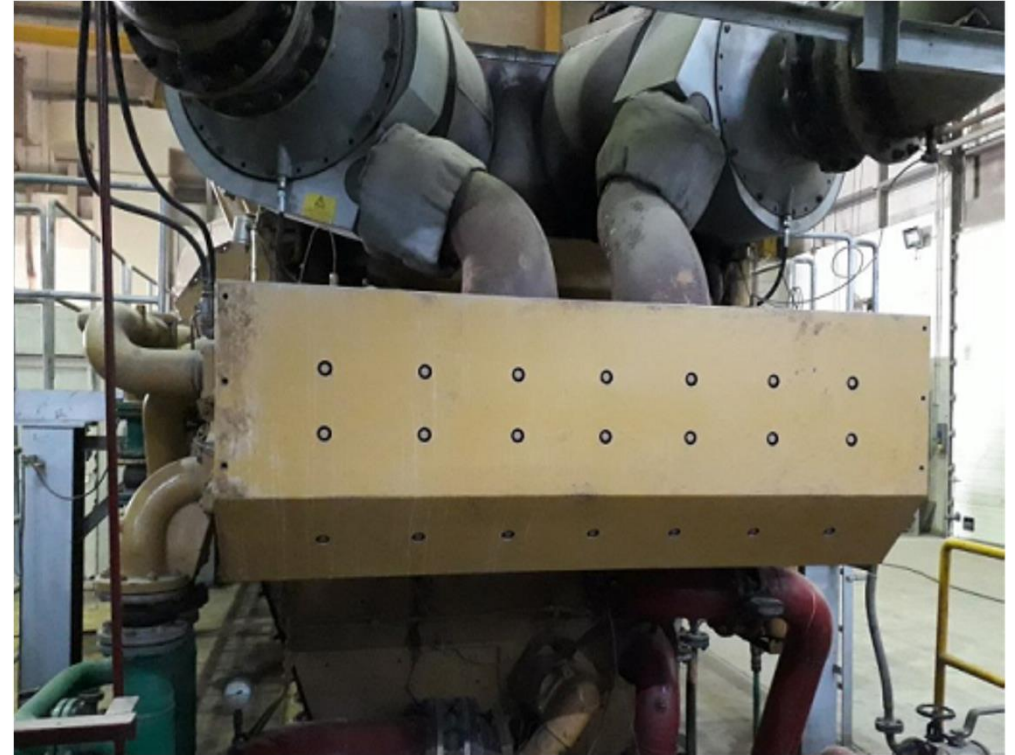
Tb Max : 650 deg

Nm Max : 503

Nb Max : 479

# TURBO CHARGER





# CHARGE AIR COOLER

SERVICED IN OCT'2017





# CHARGE AIR INTAKE



<b>S.NO</b>	<b>ITEM DESCRIPTION</b>	<b>QTY</b>	<b>NET WEIGHT ( KG )</b>
1	LUBE OIL SEPERATOR	2	4250
2	HEAT EXCHANGER	1	2360
3	ALTERNATOR	1	32500
4	ENGINE	1	-
5	HFO SEPERATOR	2	4250
6			
7			
8			
9			
10			